



**BLOOMFIELD  
VIEW**  
TIPTON

A Quality Development of 2, 3 and 4 Bedroom Homes



  
**BROADHAVEN**  
HOMES

**Connells**

To arrange a viewing, please call  
0121 556 5338 or email [wednesbury@connells.co.uk](mailto:wednesbury@connells.co.uk)

[broadhavenhomes.co.uk](http://broadhavenhomes.co.uk)

## Built for living

Whether your family is growing and you're looking for more space, or downsizing and wanting to take things a little easier. We believe our homes can accommodate whatever stage of life you're at. Using quality products and materials, combined with our experienced and highly skilled team, Broadhaven Homes are built to stand the test of time.



**BLOOMFIELD  
VIEW**  
TIPTON



**Warranty**  
Reliable, Responsive, Robust



**BROADHAVEN**  
HOMES

[broadhavenhomes.co.uk](http://broadhavenhomes.co.uk)

# Site Map

## The Fairford – 3 Bedroom

Detached – Plot 19

End Terraced – Plot 9

## The Burford – 4 Bedroom

Semi-detached – Plots 1-8

## The Stanton – 3 Bedroom

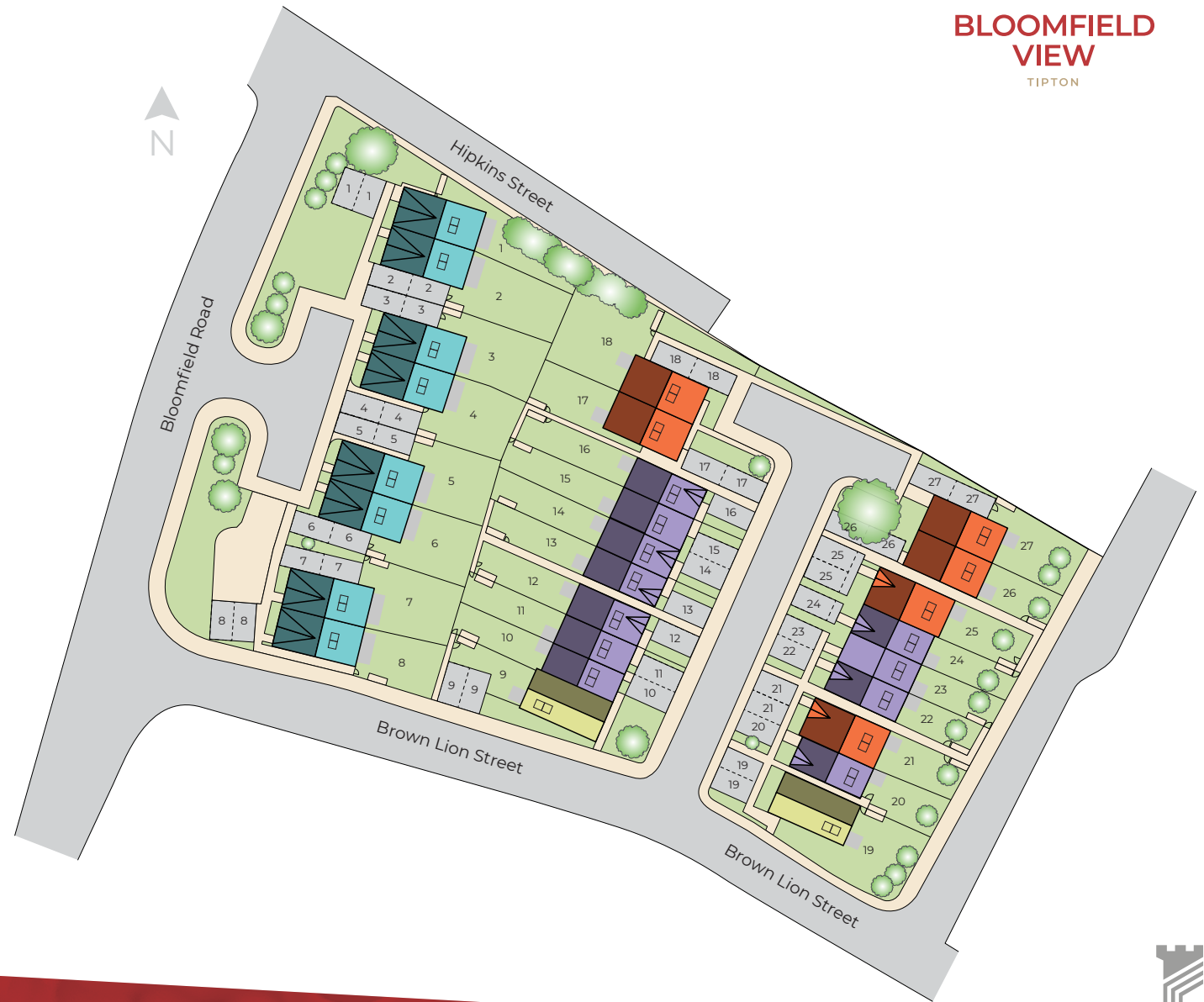
Semi-detached – Plots 17, 18, 21, 26 & 27

End Terraced – Plot 25

## The Norton – 2 Bedroom

Terraced – Plots 10, 11, 14, 15, 23, 24

End Terraced – Plots 12, 13, 16, 20, 22



**BLOOMFIELD  
VIEW**  
TIPTON

**Connells**

To arrange a viewing, please call

0121 556 5338 or email [wednesbury@connells.co.uk](mailto:wednesbury@connells.co.uk)

Artist's impression drawn from architect's plans to show the relative position of individual properties. NOT TO SCALE. This is a two dimensional drawing and will not show land contours and gradients, boundary treatments, landscaping or local authority street lighting. Landscaping is indicative. Please refer to the landscape plan available from our Sales Advisor or Selling Agent for precise details of the finish and specifications of your chosen home. The information contained in this brochure does not constitute a contract, written or implied.



**BROADHAVEN  
HOMES**

# The Norton – 2 Bedroom Terraced Home



**BLOOMFIELD  
VIEW**  
TIPTON



Set over 2 storeys.

Ground floor consists of hallway, fitted kitchen, downstairs WC, lounge/ dining area. First floor consists of main family bathroom, 2 double bedrooms.



**Connells**

To arrange a viewing, please call  
0121 556 5338 or email [wednesbury@connells.co.uk](mailto:wednesbury@connells.co.uk)

Artist's impression drawn from architect's plans to show the relative position of individual properties. NOT TO SCALE. This is a two dimensional drawing and will not show land contours and gradients, boundary treatments, landscaping or local authority street lighting. Landscaping is indicative. Please refer to the landscape plan available from our Sales Advisor or Selling Agent for precise details of the finish and specifications of your chosen home. The information contained in this brochure does not constitute a contract, written or implied.



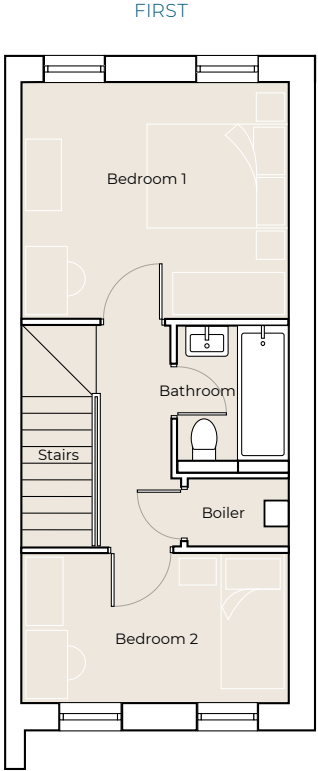
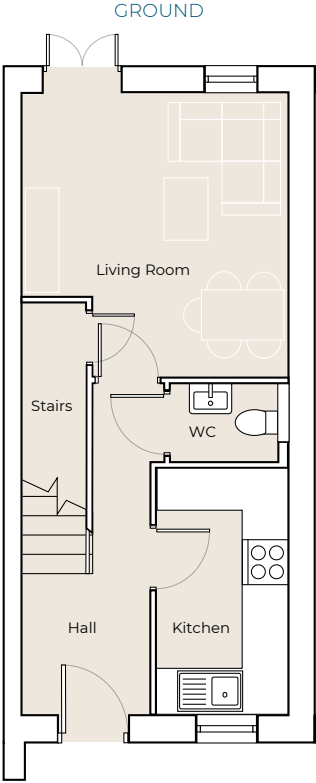
**BROADHAVEN**  
HOMES



**BLOOMFIELD  
VIEW**  
TIPTON

# The Norton – 2 Bedroom Terraced Home

Plots 10-16, 20, 22-24



**Kitchen**  
3,445 x 1,845mm  
(11' 3" x 6')

**Living Room**  
3,970 x 3,725mm  
(13' x 12' 2")

**WC**  
1,512 x 1,090mm  
(4' 11" x 3' 6")

**Bedroom 1**  
3,725 x 3,308mm  
(12' 2" x 10' 10")

**Bedroom 2**  
3,725 x 2,105mm  
(12' 2" x 6' 10")

**Bathroom**  
1,700 x 1,550mm  
(5' 6" x 5' 1")

**Connells**

To arrange a viewing, please call  
0121 556 5338 or email [wednesbury@connells.co.uk](mailto:wednesbury@connells.co.uk)

Artist's impression drawn from architect's plans to show the relative position of individual properties. NOT TO SCALE. This is a two dimensional drawing and will not show land contours and gradients, boundary treatments, landscaping or local authority street lighting. Landscaping is indicative. Please refer to the landscape plan available from our Sales Advisor or Selling Agent for precise details of the finish and specifications of your chosen home. The information contained in this brochure does not constitute a contract, written or implied.



**BROADHAVEN  
HOMES**

# The Stanton – 3 Bedroom Semi Detached & Terraced Home



**BLOOMFIELD  
VIEW**  
TIPTON



Set over 2 storeys. Ground floor consists of hallway, fitted kitchen, downstairs WC, lounge/dining area. First floor consists of main family bathroom, en-suite and 3 double bedrooms.



**Connells**

To arrange a viewing, please call  
0121 556 5338 or email [wednesbury@connells.co.uk](mailto:wednesbury@connells.co.uk)

Artist's impression drawn from architect's plans to show the relative position of individual properties. NOT TO SCALE. This is a two dimensional drawing and will not show land contours and gradients, boundary treatments, landscaping or local authority street lighting. Landscaping is indicative. Please refer to the landscape plan available from our Sales Advisor or Selling Agent for precise details of the finish and specifications of your chosen home. The information contained in this brochure does not constitute a contract, written or implied.



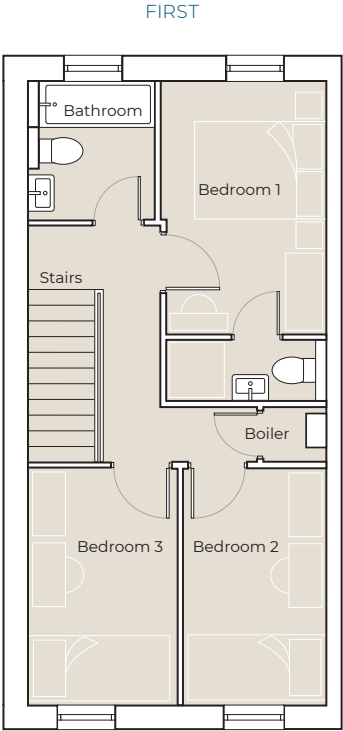
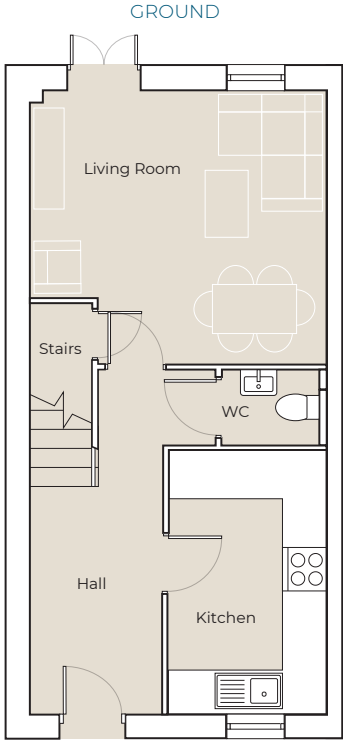
**BROADHAVEN**  
HOMES



**BLOOMFIELD  
VIEW**  
TIPTON

# The Stanton – 3 Bedroom Semi Detached & Terraced Home

Plots 17, 18, 21, 25-27



**Kitchen**  
3,908 x 2,375mm  
(12' 9" x 7' 9")

**Living Room**  
4,415 x 4,060mm  
(14' 5" x 13' 3")

**WC**  
1,581 x 1,104mm  
(5' 2" x 3' 7")

**Bathroom**  
2,050 x 1,875mm  
(8' 8" x 6' 1")

**Bedroom 1**  
3,745 x 2,440mm  
(12' 3" x 8')

**Bedroom 2**  
3,510 x 2,210mm  
(11' 6" x 7' 3")

**Bedroom 3**  
3,510 x 2,210mm  
(11' 6" x 7' 3")

**En-suite**  
2,350 x 900mm  
(7' 8" x 2' 11")

**Connells**

To arrange a viewing, please call  
0121 556 5338 or email [wednesbury@connells.co.uk](mailto:wednesbury@connells.co.uk)

Artist's impression drawn from architect's plans to show the relative position of individual properties. NOT TO SCALE. This is a two dimensional drawing and will not show land contours and gradients, boundary treatments, landscaping or local authority street lighting. Landscaping is indicative. Please refer to the landscape plan available from our Sales Advisor or Selling Agent for precise details of the finish and specifications of your chosen home. The information contained in this brochure does not constitute a contract, written or implied.



**BROADHAVEN  
HOMES**

# The Burford – 4 Bedroom Semi-detached Home



**BLOOMFIELD  
VIEW**  
TIPTON



Set over 3 storeys. Ground floor consists of hallway, fitted kitchen, downstairs WC and lounge area. First floor main family bathroom, 3 double bedrooms, one with en-suite. Second floor consists of master bedroom with en-suite.



**Connells**

To arrange a viewing, please call  
0121 556 5338 or email [wednesbury@connells.co.uk](mailto:wednesbury@connells.co.uk)

Artist's impression drawn from architect's plans to show the relative position of individual properties. NOT TO SCALE. This is a two dimensional drawing and will not show land contours and gradients, boundary treatments, landscaping or local authority street lighting. Landscaping is indicative. Please refer to the landscape plan available from our Sales Advisor or Selling Agent for precise details of the finish and specifications of your chosen home. The information contained in this brochure does not constitute a contract, written or implied.



**BROADHAVEN**  
HOMES



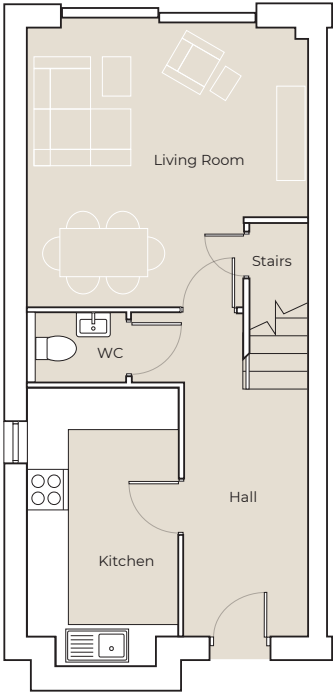


**BLOOMFIELD  
VIEW**  
TIPTON

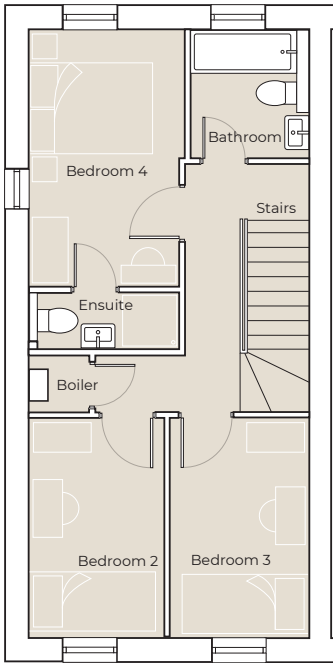
# The Burford – 4 Bedroom Semi-detached Home

Plots 1-8

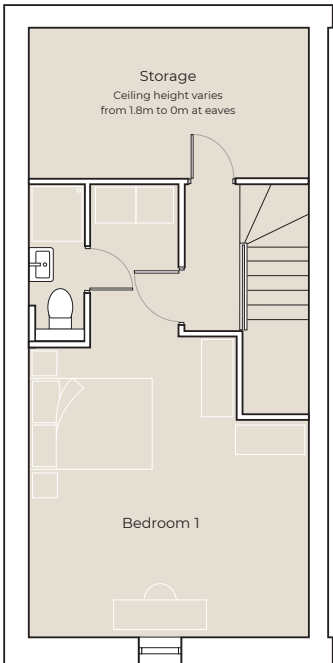
GROUND



FIRST



SECOND



**Kitchen**  
3,945 x 2,410mm  
(12' 11" x 7' 10")

**Living Room**  
4,460 x 4,450mm  
(14' 7" x 14' 7")

**WC**  
1,140 x 1,100mm  
(3' 8" x 3' 7")

**Bathroom**  
2,050 x 1,890mm  
(6' 8" x 6' 2")

**Bedroom 1**  
4,466 x 3,623mm  
(14' 7" x 11' 10")

**En-suite (Bed 1)**  
2,498 x 900mm  
(8' 2" x 2' 11")

**Bedroom 2**  
3,503 x 2,150mm  
(11' 5" x 7')

**Bedroom 3**  
3,503 x 2,220mm  
(11' 5" x 7' 3")

**Bedroom 4**  
4,100 x 2,480mm  
(13' 5" x 8' 1")

**En-suite (Bed 4)**  
2,395 x 900mm  
(7' 10" x 2' 11")

**Connells**

To arrange a viewing, please call  
0121 556 5338 or email [wednesbury@connells.co.uk](mailto:wednesbury@connells.co.uk)

Artist's impression drawn from architect's plans to show the relative position of individual properties. NOT TO SCALE. This is a two dimensional drawing and will not show land contours and gradients, boundary treatments, landscaping or local authority street lighting. Landscaping is indicative. Please refer to the landscape plan available from our Sales Advisor or Selling Agent for precise details of the finish and specifications of your chosen home. The information contained in this brochure does not constitute a contract, written or implied.



**BROADHAVEN  
HOMES**

# The Fairford – 3 Bedroom End Terraced & Detached Home



**BLOOMFIELD  
VIEW**  
TIPTON



Set over 2 storeys. Ground floor consists of hallway, fitted kitchen, downstairs WC, lounge/ dining area. First floor main family bathroom, en-suite and 3 double bedrooms.



**Connells**

To arrange a viewing, please call  
0121 556 5338 or email [wednesbury@connells.co.uk](mailto:wednesbury@connells.co.uk)

Artist's impression drawn from architect's plans to show the relative position of individual properties. NOT TO SCALE. This is a two dimensional drawing and will not show land contours and gradients, boundary treatments, landscaping or local authority street lighting. Landscaping is indicative. Please refer to the landscape plan available from our Sales Advisor or Selling Agent for precise details of the finish and specifications of your chosen home. The information contained in this brochure does not constitute a contract, written or implied.



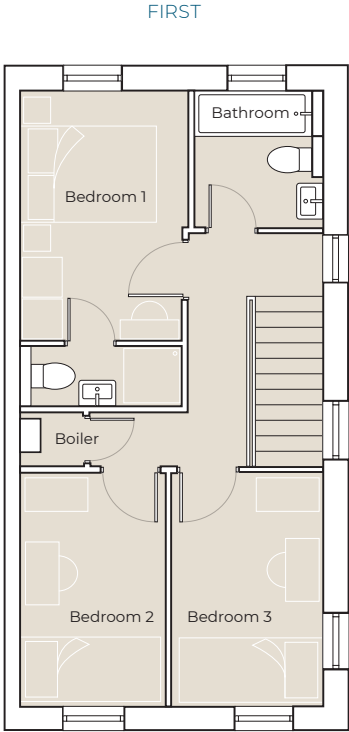
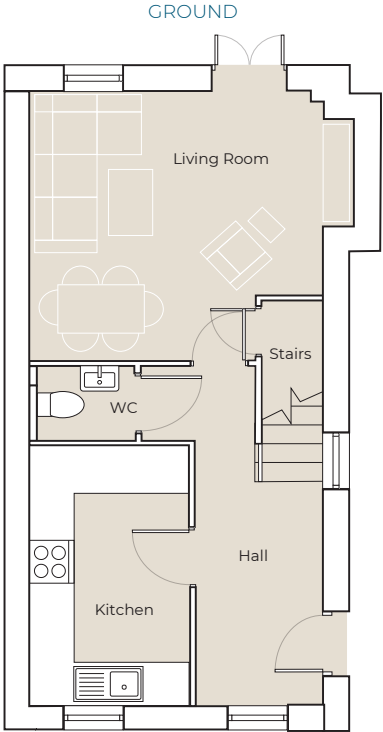
**BROADHAVEN**  
HOMES



**BLOOMFIELD  
VIEW**  
TIPTON

# The Fairford – 3 Bedroom End Terraced & Detached Home

Plots 9 & 19



**Kitchen**  
3,905 x 2,410mm  
(12' 9" x 7' 10")

**Living Room**  
4,890 x 4,057mm  
(16' x 13' 3")

**WC**  
1,445 x 1,105mm  
(4' 8" x 3' 7")

**Bedroom 1**  
3,745 x 2,480mm  
(12' 3" x 8' 1")

**Bedroom 2**  
3,510 x 2,150mm  
(11' 6" x 7')

**En-suite**  
2,395 x 900mm  
(7' 10" x 2' 11")

**Bedroom 3**  
3,510 x 2,175mm  
(11' 6" x 7' 1")

**Bathroom**  
2,050 x 1,840mm  
(6' 8" x 6')

**Connells**

To arrange a viewing, please call  
0121 556 5338 or email [wednesbury@connells.co.uk](mailto:wednesbury@connells.co.uk)

Artist's impression drawn from architect's plans to show the relative position of individual properties. NOT TO SCALE. This is a two dimensional drawing and will not show land contours and gradients, boundary treatments, landscaping or local authority street lighting. Landscaping is indicative. Please refer to the landscape plan available from our Sales Advisor or Selling Agent for precise details of the finish and specifications of your chosen home. The information contained in this brochure does not constitute a contract, written or implied.



**BROADHAVEN  
HOMES**

# Home Specification

	2 Bed	3 Bed	4 Bed
<b>General Interior</b>			
One double USB socket to kitchen, living room and bedroom 1 (plus standard sockets)	•	•	•
Fused spur is provided for future installation of security alarm by purchaser	•	•	•
Digital TV / internet point provided to lounge and bedroom one	•	•	•
Low energy white downlights to kitchen & main bathroom	•	•	•
Modern chrome circular LED ceiling light to ensuite & WC (if applicable)	•	•	•
Energy efficient pendants to bedrooms	•	•	•
Painted MDF window cills	•	•	•
Walls and ceilings painted in matt white emulsion	•	•	•
Woodwork painted in white satinwood	•	•	•
Chrome finish aluminium lever door handles on round rose	•	•	•
<b>Heating &amp; Ventilation</b>			
Combination boiler with traditional radiators	•	•	•



**Connells**

To arrange a viewing, please call  
0121 556 5338 or email [wednesbury@connells.co.uk](mailto:wednesbury@connells.co.uk)

Artist's impression drawn from architect's plans to show the relative position of individual properties. NOT TO SCALE. This is a two dimensional drawing and will not show land contours and gradients, boundary treatments, landscaping or local authority street lighting. Landscaping is indicative. Please refer to the landscape plan available from our Sales Advisor or Selling Agent for precise details of the finish and specifications of your chosen home. The information contained in this brochure does not constitute a contract, written or implied.



**BROADHAVEN**  
HOMES



# Home Specification

	2 Bed	3 Bed	4 Bed
<b>Flooring</b>			
Bronze range vinyl flooring to kitchen, WC, bathroom and ensuite (if applicable)	•	•	•
<b>Kitchen</b>			
Single bowl stainless steel sink with chrome finish tap	•	•	
1½ bowl stainless steel sink with chrome finish tap			•
Worktop & upstands (no wall tiling)	•	•	•
Laminated worktops	•	•	•
Built-in stainless steel single oven	•	•	
Built-in stainless steel double oven			•
Splashback to ovens (frosted glass)	•	•	•
Electric induction hob x 4 ring	•	•	•
Stainless steel chimney hood	•	•	•
Space and power for fridge freezer	•	•	•
Intergrated dishwasher (slimline in 2 bedroom homes)	•	•	•
Space and connections for washing machine	•	•	•



**Connells**

To arrange a viewing, please call  
0121 556 5338 or email [wednesbury@connells.co.uk](mailto:wednesbury@connells.co.uk)

Artist's impression drawn from architect's plans to show the relative position of individual properties. NOT TO SCALE. This is a two dimensional drawing and will not show land contours and gradients, boundary treatments, landscaping or local authority street lighting. Landscaping is indicative. Please refer to the landscape plan available from our Sales Advisor or Selling Agent for precise details of the finish and specifications of your chosen home. The information contained in this brochure does not constitute a contract, written or implied.



**BROADHAVEN**  
HOMES



# Home Specification

	2 Bed	3 Bed	4 Bed
<b>Bathrooms/en-suites</b>			
Chrome taps	•	•	•
Chrome heated towel rail to ensuites & bathrooms	•	•	•
Electric shower over bath	•	•	•
Thermostatic shower to ensuite (if applicable)	•	•	•
Walls fully tiled around bath/shower and half tiled to remaining walls			•
Walls fully tiled around bath/shower and splashbacks to sinks (if app)	•	•	
Wall tiles to splashbacks	•	•	•
<b>Exterior</b>			
External up and down wall light with PIR detection to front satin chrome	•	•	•
Outside tap to rear	•	•	•
Pressed grey paving slabs to rear garden (see site plan)	•	•	•
Windows and external doors (Secured By Design)	•	•	•
Solar panels to each property	•	•	•
Fencing – concrete posts, gravel boards and pressure treated feather edge panels *	•	•	•
Electric vehicle charging point	•	•	•

\* Specialist acoustic and bespoke fencing will be used on retaining walls to meet planning conditions.  
Please ask your sales agent for more details.



**Warranty**

Reliable, Responsive, Robust



**Connells**

To arrange a viewing, please call  
0121 556 5338 or email [wednesbury@connells.co.uk](mailto:wednesbury@connells.co.uk)

Artist's impression drawn from architect's plans to show the relative position of individual properties. NOT TO SCALE. This is a two dimensional drawing and will not show land contours and gradients, boundary treatments, landscaping or local authority street lighting. Landscaping is indicative. Please refer to the landscape plan available from our Sales Advisor or Selling Agent for precise details of the finish and specifications of your chosen home. The information contained in this brochure does not constitute a contract, written or implied.



**BROADHAVEN**  
HOMES

# Home Specification

## Upgrades available on request (at additional cost)

Kitchen range

Additional freestanding appliances not included as standard such as washing machine or fridge freezer

Carpets

Floor tiling in lieu of vinyl

Additional electrical sockets

Turf to rear garden



**Connells**

To arrange a viewing, please call  
0121 556 5338 or email [wednesbury@connells.co.uk](mailto:wednesbury@connells.co.uk)

Artist's impression drawn from architect's plans to show the relative position of individual properties. NOT TO SCALE. This is a two dimensional drawing and will not show land contours and gradients, boundary treatments, landscaping or local authority street lighting. Landscaping is indicative. Please refer to the landscape plan available from our Sales Advisor or Selling Agent for precise details of the finish and specifications of your chosen home. The information contained in this brochure does not constitute a contract, written or implied.



  
**BROADHAVEN**  
HOMES

# Location Bloomfield Road, Tipton DY4 9ES



## About the Area

Tipton is a small town in the Metropolitan Borough of Dudley that has recently become more prosperous with improving housing stock and some substantial development in the nearby Dudley town centre. This includes the addition of new Metro links and improvements to the road network.

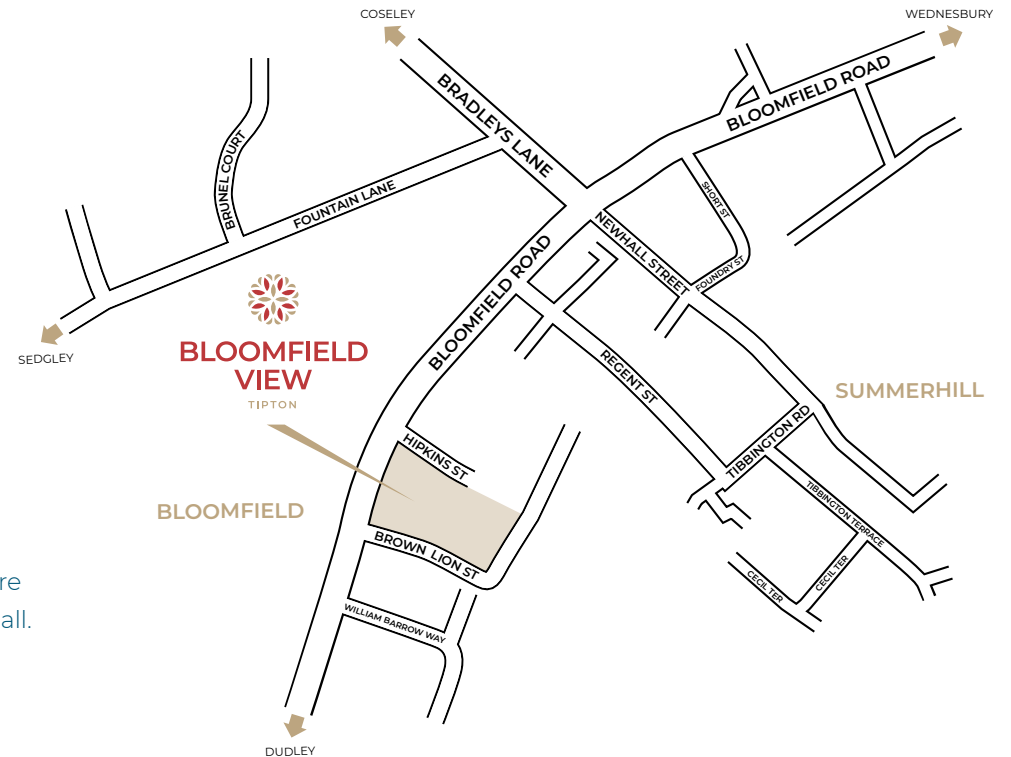
Tipton boasts excellent travel links to the M5/M6 motorway network. There is also a nearby train station which provides direct links to Birmingham New Street Station, the West Midlands conurbation and beyond. The town has numerous bus stops providing bus links to destinations across the borough.

## Leisure and Pleasure

Bloomfield View is conveniently located for some of the West Midlands most historical landmarks. Significantly, Dudley Zoological Gardens and the Black Country Museum are both just a short drive away.

There are also plenty of shopping opportunities, Dudley town centre or the Merry Hill Centre (approx. 6 miles away) which has over 250 shops, a separate retail park, cinema, and food hall. Adjacent to the main shopping centre is a marina called The Waterfront accommodating a number of bars and restaurants. Dudley No.1 Canal passes through The Waterfront and along the edge of the shopping centre before descending to the Delph Locks.

Dudley Golf Club offers a warm welcome, set amidst beautiful scenery the course is situated at the highest point of the West Midlands so offers incredible views of the surrounding countryside.



**Connells**

To arrange a viewing, please call  
0121 556 5338 or email [wednesbury@connells.co.uk](mailto:wednesbury@connells.co.uk)

Artist's impression drawn from architect's plans to show the relative position of individual properties. NOT TO SCALE. This is a two dimensional drawing and will not show land contours and gradients, boundary treatments, landscaping or local authority street lighting. Landscaping is indicative. Please refer to the landscape plan available from our Sales Advisor or Selling Agent for precise details of the finish and specifications of your chosen home. The information contained in this brochure does not constitute a contract, written or implied.



  
**BROADHAVEN**  
HOMES



## Location Bloomfield Road, Tipton DY4 9ES

### Local Primary/Junior Schools

Sacred Heart Primary School – 1.6 miles  
Sedgley Road East, Tipton DY4 8UH

Summerhill Primary Academy – 1.1 miles  
Upper Church Lane, Tipton DY4 9PF

St Martins C of E Primary School – 1.6 miles  
Lower Church Lane Tipton DY4 7PG

### Local Secondary Schools

Q3 Academy – 1.7 miles  
Alexandra Road, Tipton DY4 7NR

Gospel Oak Secondary School – 1.5 miles  
Bilston Road, Tipton DY4 0BZ

### Local Hospitals

Russells Hall Hospital – 4.3 miles  
Pensnett Road,  
Dudley DY1 2HQ

Sandwell Hospital – 5 miles  
Hallam Street,  
West Bromwich B71 4HJ

### Neighbouring Towns & Cities

Tipton – 0.7 miles  
West Bromwich – 5.6 miles  
Dudley – 2.6 miles  
Stourbridge – 7.8 miles  
Walsall – 6.8 miles

### Nearby Train Stations

Tipton – 1.2 miles  
Wolverhampton – 5.1 miles  
Oldbury – 4.1 miles

### Local Supermarkets

Asda Tipton – 1.1 miles  
Wednesbury Oak Road,  
Tipton DY4 0BP

Lidl - 2.5 miles  
119 Horseley Heath,  
Tipton DY4 7AH

Aldi – 1.4 miles  
Priory Road,  
Dudley DY1 4DS

### Local Sports Centres & Gymnasiums

Tipton Sports  
Academy – 1.2 miles  
Wednesbury Oak Road,  
Tipton DY4 0BS

Tipton Leisure – 1.4 miles  
Alexandra Road,  
Tipton DY4 8TA



**Connells**

To arrange a viewing, please call  
0121 556 5338 or email [wednesbury@connells.co.uk](mailto:wednesbury@connells.co.uk)

Artist's impression drawn from architect's plans to show the relative position of individual properties. NOT TO SCALE. This is a two dimensional drawing and will not show land contours and gradients, boundary treatments, landscaping or local authority street lighting. Landscaping is indicative. Please refer to the landscape plan available from our Sales Advisor or Selling Agent for precise details of the finish and specifications of your chosen home. The information contained in this brochure does not constitute a contract, written or implied.

**BROADHAVEN**  
HOMES

**HBF**  
HOME BUILDERS FEDERATION

# Home Builders Federation



## Buy your home with confidence

Home-buying customers of HBF members benefit from their association with the Home Builders Federation in several ways.

HBF members adhere to high industry standards, ensuring the quality and reliability of the homes they build. Through initiatives like the 'HBF Star Rating' scheme, customers can assess builder performance based on verified satisfaction surveys, providing transparency and confidence in their home-buying decisions.

HBF's advocacy for industry improvements and customer protection also ensures that homebuyers are at the forefront of policies that promote safety, sustainability, and long-term value in their new homes.



**Connells**

To arrange a viewing, please call  
0121 556 5338 or email [wednesbury@connells.co.uk](mailto:wednesbury@connells.co.uk)

Artist's impression drawn from architect's plans to show the relative position of individual properties. NOT TO SCALE. This is a two dimensional drawing and will not show land contours and gradients, boundary treatments, landscaping or local authority street lighting. Landscaping is indicative. Please refer to the landscape plan available from our Sales Advisor or Selling Agent for precise details of the finish and specifications of your chosen home. The information contained in this brochure does not constitute a contract, written or implied.



**BROADHAVEN**  
HOMES



# BLOOMFIELD VIEW

TIPTON

**Connells**



**BROADHAVEN**  
HOMES

To arrange a viewing, please call Connells on 0121 556 5338 or email [wednesbury@connells.co.uk](mailto:wednesbury@connells.co.uk)